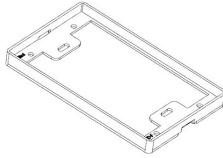
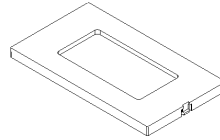




Wood Flange

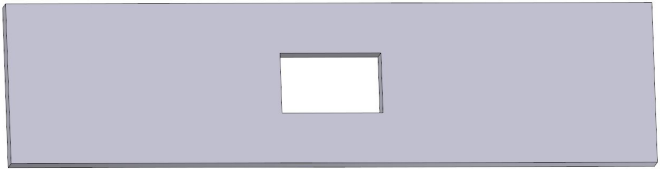


Final Cover



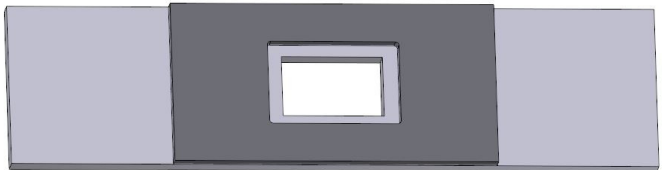
1. Cut the junction box hole

If using a Carlon B114R old work box, cut a hole $3 \frac{3}{4}'' \times 2 \frac{3}{8}''$ in the wood centered on the intended location of the outlet. If using a different box, cut the hole to accommodate the box.

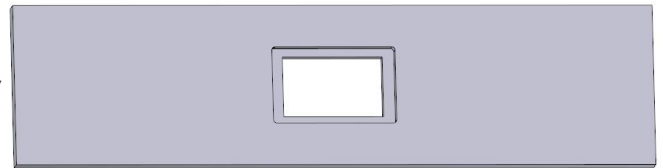


2. Router out the flange recess

Attach the router template to the wood, centered over the cutout for the junction box.

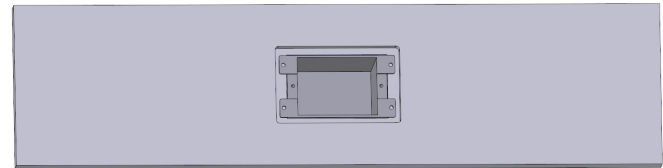


Rout out the flange area to a depth of 0.39 inches using a $\frac{1}{4}''$ router bit and a $\frac{1}{2}''$ router template guide collar. The resulting inset will measure $4 \frac{5}{8}'' \times 2 \frac{7}{8}''$ with $\frac{1}{8}''$ radius corners.



3. Insert the junction box

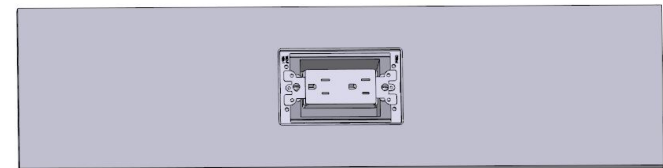
Insert and secure a Carlon B114R old work box.



4. Insert the accessory

Insert the flange and wire and attach the outlet or other accessory.

Install all wiring in compliance with applicable electrical codes.



5. Insert the final cover

Insert the final cover.

