

DesignMod LLC

Smoothline®

Flush-mount wall plate system
wood panel installation instructions

Model: WD-100-2

DesignMod LLC

P.O. Box 13625

S. Lake Tahoe, CA 96151

www.DesignMod.com

info@designmod.com

888-708-3663

Patent Pending

WARNING

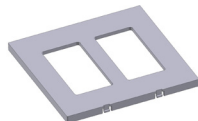
Disconnect electrical service before installation
Desconecte el servicio eléctrico antes de la instalación
Débrancher le service d'électricité avant la mise en place



Wood Flange



Final Cover



1. Cut the junction box hole

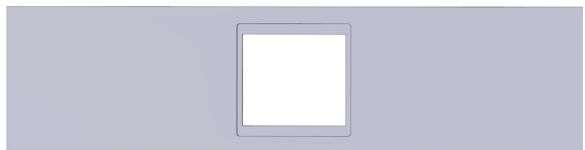
If using a Carlon B225R old work box, cut a hole in the wood $3 \frac{3}{4}'' \times 4 \frac{1}{4}''$ centered on the intended location of the outlet. If using a different box, cut the hole to accommodate the box.



2. Router out the flange recess

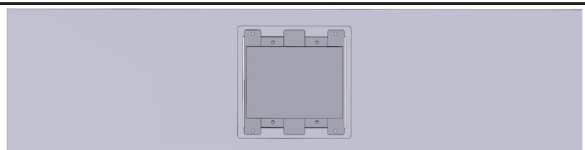
Attach the router template (TM-WD-100-2) to the wood, centered over the cutout for the junction box. Note the template direction relative to the outlet direction shown below.

Rout out the flange area to a depth of 0.39 inches using a $\frac{1}{4}''$ router bit and a $\frac{1}{2}''$ router template guide collar. The resulting inset will measure $4 \frac{5}{8}'' \times 4 \frac{11}{16}''$ with $\frac{1}{8}''$ radius corners.



3. Insert the junction box

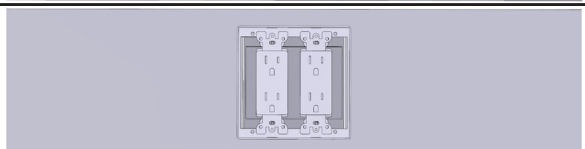
Insert and secure a Carlon B225R old work box.



4. Insert the accessory

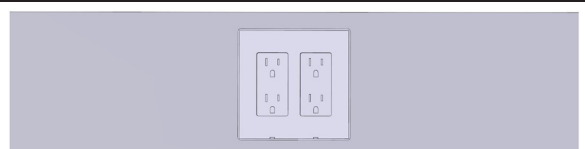
Insert the flange and wire and attach the outlet or other accessory.

Install all wiring in compliance with applicable electrical codes.



5. Insert the final cover

Insert the final cover.



DesingMod warrants that its products are free from defects in materials and workmanship for ninety (90) days from the date of purchase. Upon notification of a defect, DesingMod will, at its option, replace the defective product or refund the purchase price. Proof of purchase is required. Misuse or modification of the product voids all warranties. **THE ABOVE WARRANTY IS THE SOLE WARRANTY FOR THIS PRODUCT, AND ALL OTHER EXPRESS OR IMPLIED WARRANTIES, INCLUDING ANY IMPLIED WARRANTY OF MERCHANTABILITY OR FITNESS FOR A PARTICULAR PURPOSE, ARE EXCLUDED. DESINGMOD SHALL NOT BE LIABLE FOR ANY INDIRECT, SPECIAL, INCIDENTAL OR CONSEQUENTIAL DAMAGES OR LOSS OF PROFITS RELATING TO THE PRODUCT.**

©2015 DesignMod LLC